

---

**GEOGRAPHY**

**9696/12**

Paper 1 Core Physical Geography

**October/November 2018**

INSERT

**1 hour 30 minutes**

---

**READ THESE INSTRUCTIONS FIRST**

This Insert contains all the resources referred to in the questions.



---

This document consists of **4** printed pages.

## Figs. 1.1 and 1.2 for Question 1

Figs. 1.1 and 1.2 show storm hydrographs for drainage basins with different characteristics

Fig. 1.1

size of drainage basin

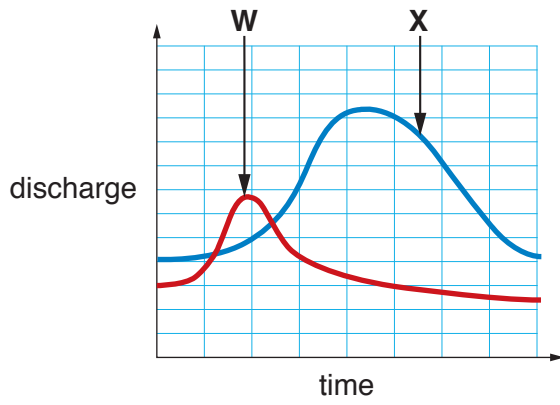


Fig. 1.2

vegetation

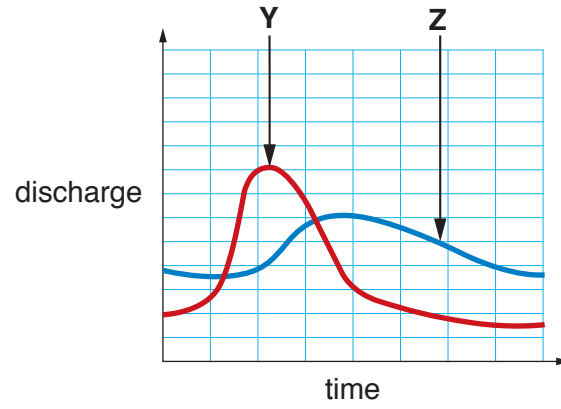
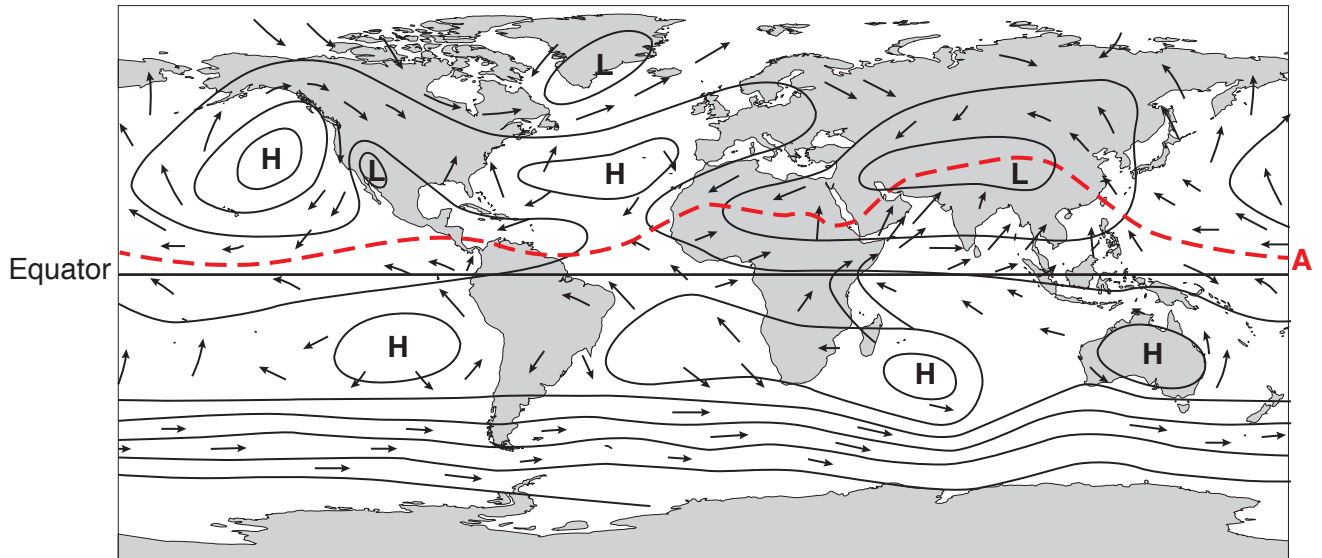


Fig. 2.1 for Question 2

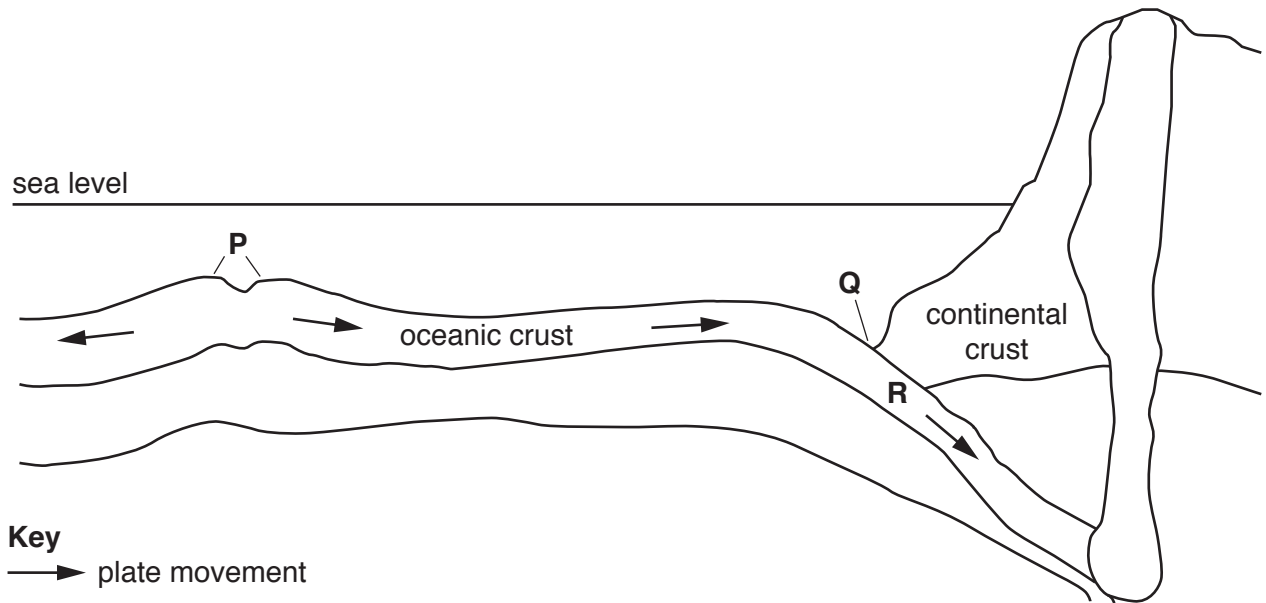
## Global surface pressure systems and surface winds for July

**Key**

- H** high pressure
- L** low pressure
- wind direction

Fig. 3.1 for Question 3

## A cross-section of part of the Earth's crust



Permission to reproduce items where third-party owned material protected by copyright is included has been sought and cleared where possible. Every reasonable effort has been made by the publisher (UCLES) to trace copyright holders, but if any items requiring clearance have unwittingly been included, the publisher will be pleased to make amends at the earliest possible opportunity.

To avoid the issue of disclosure of answer-related information to candidates, all copyright acknowledgements are reproduced online in the Cambridge International Examinations Copyright Acknowledgements Booklet. This is produced for each series of examinations and is freely available to download at [www.cie.org.uk](http://www.cie.org.uk) after the live examination series.

Cambridge International Examinations is part of the Cambridge Assessment Group. Cambridge Assessment is the brand name of University of Cambridge Local Examinations Syndicate (UCLES), which is itself a department of the University of Cambridge.