

CANDIDATE  
NAME

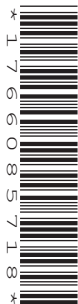
--

CENTRE  
NUMBER

--	--	--	--	--

CANDIDATE  
NUMBER

--	--	--	--



**FASHION AND TEXTILES**

**6130/01**

Paper 1 Theory

**October/November 2019**

**2 hours**

Candidates answer on the Question Paper.

Additional Materials:      Ruler  
   Small piece of fabric, needle and thread

**READ THESE INSTRUCTIONS FIRST**

Write your centre number, candidate number and name on the work you hand in.

Write in dark blue or black pen.

You may use an HB pencil for any diagrams or rough working.

Do not use staples, paper clips, glue or correction fluid.

DO **NOT** WRITE IN ANY BARCODES.

You should illustrate your answers by means of clear, bold diagrams wherever necessary.

You may use a needle and thread and a small piece of fabric to help in making drawings of stitches.

This fabric should **not** be handed in with your work.

**Section A**

Answer **all** parts of Question 1.

You are advised to spend no longer than 40 minutes on Section A.

**Section B**

Answer any **three** questions.

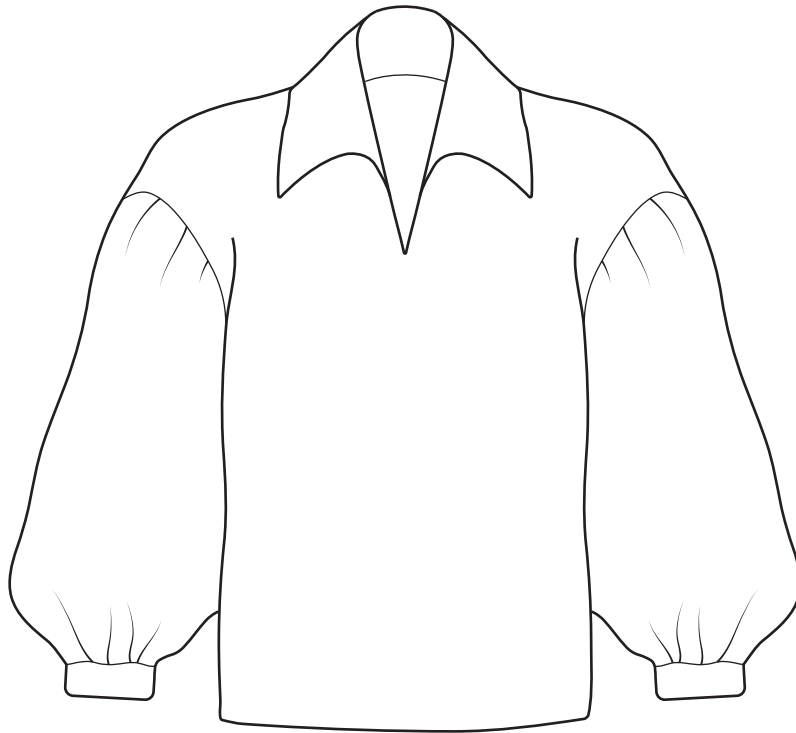
The number of marks is given in brackets [ ] at the end of each question or part question.

This document consists of **20** printed pages.

**Section A**

Answer **all** questions in this section.

1 Fig. 1.1 is a drawing of a shirt.



**Fig. 1.1**

(a) Lawn is a suitable fabric for the shirt in Fig. 1.1.

(i) Identify the construction method used to make lawn fabric.

..... [1]

(ii) Describe lawn fabric in terms of its:

Appearance .....

Feel/handle .....

[2]

(iii) State **two** reasons why lawn fabric is suitable for the style of shirt in Fig. 1.1.

Reason 1 .....

Reason 2 .....

[2]

(iv) Identify **three** fabric finishes to use on lawn fabric made from cotton.

Finish 1 .....

Finish 2 .....

Finish 3 .....

[3]

(v) Identify a **natural** fibre, other than cotton, that could be used to make a fabric for the shirt in Fig. 1.1.

..... [1]

(vi) State **three** advantages of using the fibre identified in **1(a)(v)** to make fabric for the shirt in Fig. 1.1.

Advantage 1 .....

.....

Advantage 2 .....

.....

Advantage 3 .....

.....

[3]

(vii) Explain why synthetic fibres are **not** environmentally friendly.

.....

.....

.....

..... [2]

(b) (i) Identify **two** places where interfacing could be used on the shirt in Fig. 1.1.

1 .....

.....

2 .....

.....

[2]

(ii) State **three** reasons to use interfacing on the shirt in Fig. 1.1.

Reason 1 .....

Reason 2 .....

Reason 3 .....

[3]

- (c) (i) State the correct order of work to **make** the straight band cuff for the sleeve of the shirt in Fig. 1.1. You may use labelled diagrams in your answer.

.....

.....

.....

.....

[4]

- (ii) State the correct order of work to **attach** the straight band cuff to the sleeve of the shirt in Fig. 1.1. You may use labelled diagrams in your answer.

.....

.....

.....

.....

[4]

- (d) (i) Sketch and label an original creative design to go on the shirt in Fig. 1.1. Your design must combine **three** different named hand embroidery stitches.

[4]

- (ii) Explain how to stitch **one** of the hand embroidery stitches shown in your design in 1(d)(i). You must use labelled diagrams in your answer.

[4]

(e) Identify **two** methods that could be used to make a hem on the shirt in Fig. 1.1.

Method 1 .....

Method 2 .....

[2]

(f) Identify **three** processes in which Computer Aided Manufacture (CAM) could be used in the production of a shirt.

1 .....

2 .....

3 .....

[3]

[Total: 40]

## Section B

Answer **three** questions from this section.

- 2 (a) (i) Identify **one** regenerated fibre.

..... [1]

- (ii) Identify **two** raw materials used to make the fibre identified in **2(a)(i)**.

Raw material 1 .....

Raw material 2 .....

[2]

- (iii) Explain how regenerated fibres are manufactured.

.....

.....

.....

.....

.....

..... [3]

- (b) Sketch the care symbols for a garment made from the regenerated fibre identified in **2(a)(i)**.

Care process	Sketch of symbol
Wash	
Iron	

[2]





(d) Compare the construction of **two** different woven fabrics. You may use labelled diagrams in your answer.

.....

.....

.....

.....

.....

.....

.....

.....

.....

.....

.....

.....

.....

.....

.....

.....

[6]

[Total: 20]

3 (a) Give an example of **one** different type of garment made by each of the following production methods:

One-off production .....

Batch production .....

Mass production .....

[3]

(b) Identify **two** ways a manufacturer can reduce waste when producing garments.

1 .....

.....

2 .....

.....

[2]

(c) (i) **Sketch** and **label** an original appliqué design suitable for a child's dress.

[3]

- (ii) Explain how to prepare the appliqué designed in 3(c)(i) and attach it to the child's dress. You may use labelled diagrams in your answer.

.....

.....

.....

.....

.....

.....

.....

.....

.....

.....

.....

.....

.....

.....

.....

.....

[6]



4 (a) (i) Define the term 'reflective textiles'.

.....  
.....  
.....  
..... [2]

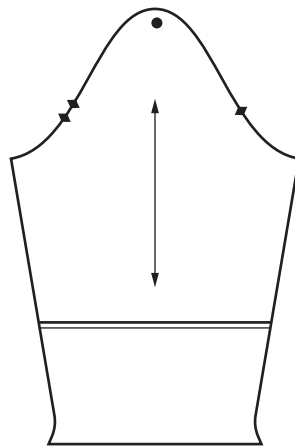
(ii) Give **one** example of a garment that uses reflective textile fabric.

..... [1]

(iii) Identify **one** smart textile fabric.

..... [1]

(b) Fig. 4.1. is a drawing of a sleeve pattern.



**Fig. 4.1**

Label the symbols shown on the sleeve pattern piece in Fig. 4.1.

[4]





5 (a) Identify **four** safety rules to follow when using pressing equipment.

- 1 .....
- .....
- 2 .....
- .....
- 3 .....
- .....
- 4 .....
- .....

[4]

(b) Identify **four** factors to consider when choosing fabric for a child's dress.

- 1 .....
- .....
- 2 .....
- .....
- 3 .....
- .....
- 4 .....
- .....

[4]





6 (a) Fig. 6.1 is a drawing of a sports top.

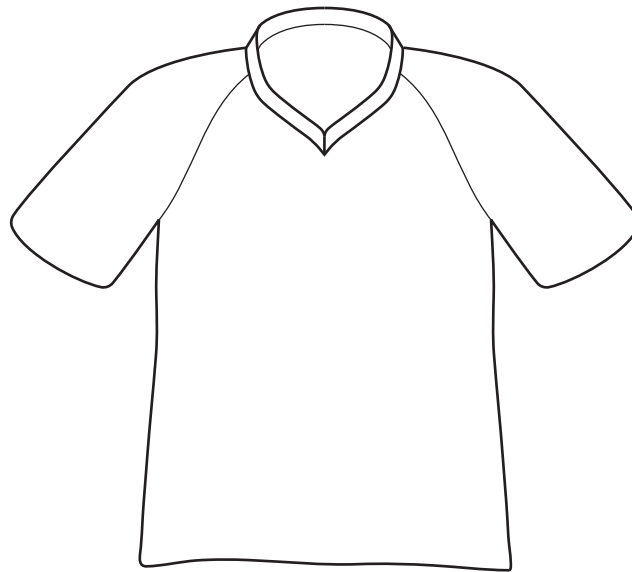


Fig. 6.1

(i) Identify the type of sleeve on the sports top shown in Fig. 6.1.

..... [1]

(ii) State **two** advantages of using this type of sleeve for a sports top.

Advantage 1 .....

.....

Advantage 2 .....

.....

[2]

(b) State the method used to finish the neckline of the sports top in Fig. 6.1.

..... [1]

(c) Identify **one** natural fibre and **one** synthetic fibre that could be used to make the fabric for the sports top in Fig. 6.1.

Natural fibre .....

Synthetic fibre .....

[2]



(ii) Evaluate the suitability of knitted fabrics for sports tops.

.....

.....

.....

.....

.....

.....

.....

.....

.....

.....

.....

.....

.....

.....

.....

.....

[6]

[Total: 20]

---

Permission to reproduce items where third-party owned material protected by copyright is included has been sought and cleared where possible. Every reasonable effort has been made by the publisher (UCLES) to trace copyright holders, but if any items requiring clearance have unwittingly been included, the publisher will be pleased to make amends at the earliest possible opportunity.

To avoid the issue of disclosure of answer-related information to candidates, all copyright acknowledgements are reproduced online in the Cambridge Assessment International Education Copyright Acknowledgements Booklet. This is produced for each series of examinations and is freely available to download at [www.cambridgeinternational.org](http://www.cambridgeinternational.org) after the live examination series.

Cambridge Assessment International Education is part of the Cambridge Assessment Group. Cambridge Assessment is the brand name of the University of Cambridge Local Examinations Syndicate (UCLES), which itself is a department of the University of Cambridge.