



Cambridge IGCSE™

MUSIC

0410/12

Paper 1 Listening

October/November 2022

INSERT

Approximately 1 hour 15 minutes

INFORMATION

- This insert contains the scores for Music C1 and your chosen Set Work in Section D.
- You may annotate this insert and use the blank spaces for planning. **Do not write your answers** on the insert.



This document has **8** pages.

INSERT FOR MUSIC C1

Answer the questions in the question paper, not on this insert.

1 2 3 4 5 6

7 8 9 10 11

Complete the melody

12 13 14 15 16

17 18 19 20 21

22 23 24 25 26 27

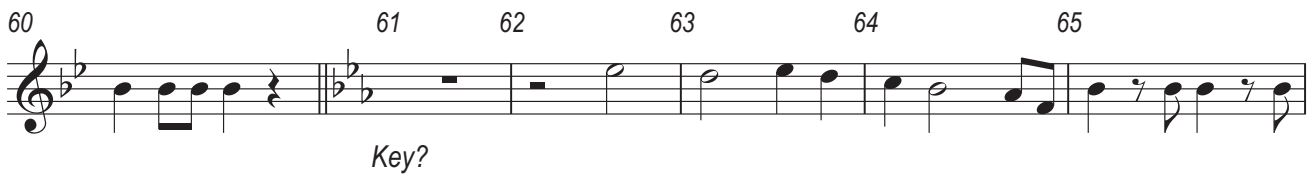
28 29 30 31 32 33

Compositional device?

34 35 36 37 38

Interval?

39 40 41 42 43 44



INSERT FOR MUSIC D2

Answer the questions in the question paper, not on this insert.

1 Violins 2 3 4 5

Key?

6 7 8 9

10 11 12 13 14 15

16 17 18 19 20 21 22

23 24 25 26 27

28 29 30

31 32

Extract continues...

INSERT FOR MUSIC D3

Answer the questions in the question paper, not on this insert.

1 2 3 4 5 6

Part of Exposition? Contrasts?

7 8 9 10 11 12

13 14 15 16 17 18

Part of Exposition?

19 20 21 22 23 24

25 26 27 28 29

30 31 32 33

34 35 36 37

38 39 40 41

42 43 44 45

46 47 48 49 50 51

Chord? Next?

INSERT FOR MUSIC D4

Answer the questions in the question paper, not on this insert.

1 2 3 4

3 3 3 3 3

Section? Military?

5 6 7 8 9 10 11

3

Chord? How is it played?

12 13 14 15 16 17

Melody? Accompaniment?

18 19 20 21

22 Violas 23 Violins 24 25 26

Write in treble clef

27 28 29 30

3 3

31 32 33 34

Permission to reproduce items where third-party owned material protected by copyright is included has been sought and cleared where possible. Every reasonable effort has been made by the publisher (UCLES) to trace copyright holders, but if any items requiring clearance have unwittingly been included, the publisher will be pleased to make amends at the earliest possible opportunity.

To avoid the issue of disclosure of answer-related information to candidates, all copyright acknowledgements are reproduced online in the Cambridge Assessment International Education Copyright Acknowledgements Booklet. This is produced for each series of examinations and is freely available to download at www.cambridgeinternational.org after the live examination series.

Cambridge Assessment International Education is part of Cambridge Assessment. Cambridge Assessment is the brand name of the University of Cambridge Local Examinations Syndicate (UCLES), which is a department of the University of Cambridge.