



# Cambridge International AS & A Level

CANDIDATE  
NAME

CENTRE  
NUMBER

|  |  |  |  |  |
|--|--|--|--|--|
|  |  |  |  |  |
|--|--|--|--|--|

CANDIDATE  
NUMBER

|  |  |  |  |
|--|--|--|--|
|  |  |  |  |
|--|--|--|--|



**INFORMATION TECHNOLOGY**

**9626/13**

Paper 1 Theory

**May/June 2023**

**1 hour 45 minutes**

You must answer on the question paper.

No additional materials are needed.

## INSTRUCTIONS

- Answer **all** questions.
- Use a black or dark blue pen.
- Write your name, centre number and candidate number in the boxes at the top of the page.
- Write your answer to each question in the space provided.
- Do **not** use an erasable pen or correction fluid.
- Do **not** write on any bar codes.
- You may use an HB pencil for any diagrams, graphs or rough working.
- Calculators must **not** be used in this paper.

## INFORMATION

- The total mark for this paper is 70.
- The number of marks for each question or part question is shown in brackets [ ].

This document has **12** pages. Any blank pages are indicated.



3 There are different types of processing including batch processing and real-time processing.

(a) Without referring to master files and transaction files, describe what is meant by batch processing.

.....  
.....  
.....  
.....  
.....  
.....  
.....  
..... [3]

(b) Rocket guidance systems are used in space exploration.

Explain why a rocket guidance system is an example of the use of real-time processing.

.....  
.....  
.....  
.....  
.....  
.....  
.....  
..... [3]







7 Explain the reasons for the digital divide between the old and the young.

.....  
.....  
.....  
.....  
.....  
.....  
.....  
.....  
.....  
.....  
.....  
.....  
.....  
.....  
.....  
.....  
.....

..... [6]

8 Spyware is a type of malware.

Describe the consequences to the individual of the use of spyware on their computer.

.....  
.....  
.....  
.....  
.....  
.....  
.....  
.....  
.....  
.....  
.....  
.....  
.....  
.....

..... [4]





10 An expert system is being trialled for use as part of a study on animal identification. It has been set the following task.

The goal is to decide the colour of a bird named Hortense.  
Two facts are provided:

- she sings
- she is 15 cm tall.

The rule base contains the following three rules:

- IF X is an ostrich – THEN X has a long neck
- IF X sings and X is 15 cm tall – THEN X is a canary
- IF X is a canary – THEN X is yellow

The inference engine has concluded that Hortense is yellow. It has taken the facts as data and used the rules base to decide:

- 1 Hortense is a canary
- 2 Hortense is yellow

(a) Identify which type of chaining the inference engine used.

.....  
..... [1]

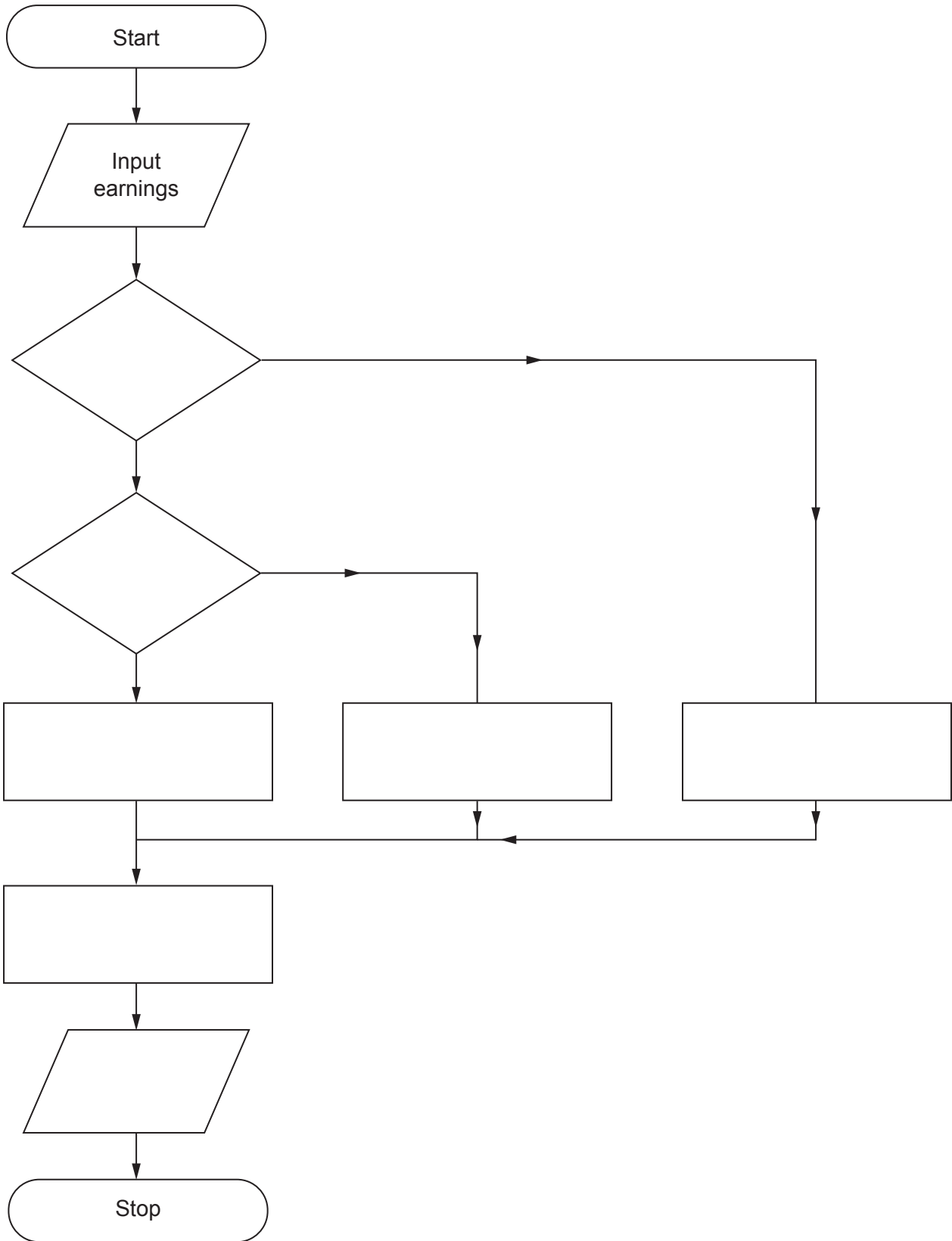
(b) Explain the reasoning the inference engine used.

.....  
.....  
.....  
.....  
.....  
.....  
.....  
.....  
.....  
.....  
..... [4]

11 In Ruritania these are the tax rules.

- People who earn up to \$10 000 pay no tax.
- People who earn between \$10 000 and \$40 000 pay 20% tax on their earnings **above** \$10 000.
- People who earn more than \$40 000:  
pay \$6 000 ( $\$30\,000 \times 20\%$ )  
and pay 40% tax on their earnings **above** \$40 000.

Complete this flowchart which shows how the net wage (the money earned after tax is paid) is calculated and is output for an individual in Ruritania.



[8]

**BLANK PAGE**

---

Permission to reproduce items where third-party owned material protected by copyright is included has been sought and cleared where possible. Every reasonable effort has been made by the publisher (UCLES) to trace copyright holders, but if any items requiring clearance have unwittingly been included, the publisher will be pleased to make amends at the earliest possible opportunity.

To avoid the issue of disclosure of answer-related information to candidates, all copyright acknowledgements are reproduced online in the Cambridge Assessment International Education Copyright Acknowledgements Booklet. This is produced for each series of examinations and is freely available to download at [www.cambridgeinternational.org](http://www.cambridgeinternational.org) after the live examination series.

Cambridge Assessment International Education is part of Cambridge Assessment. Cambridge Assessment is the brand name of the University of Cambridge Local Examinations Syndicate (UCLES), which is a department of the University of Cambridge.